

JOB NAME _____ SERIAL NUMBER _____



Arctic®

WALK-IN COOLERS AND FREEZERS

Engineering Reimagined®

Arctic Sliding Doors Installation

Latest revision available at: www.arcticwalkins.com/resource-library/



VISIT US



REPLACEMENT PARTS



WARRANTY

Manufactured By:
Arctic Industries, LLC.

Miami, FL
(305) 883-5581

Los Angeles, CA
(626) 508-0920



Intertek
CONFORMS TO
NSF STD 7



Intertek
CONFORMS TO
UL STD 471

TABLE OF CONTENTS

TABLE OF CONTENTS.....	1
SECTION 1: GENERAL INFORMATION.....	2
1.1 INTRODUCTION.....	2
1.2 INSPECTION	2
1.3 HANDLING OF PANELS	2
1.4 IMPORTANT INFORMATION BEFORE INSTALLATION	3
SECTION 2: INSTALLATION	4
2.1 LIST OF PARTS.....	4
2.2 INSTALLATION PROCEDURE	5
2.3 ELECTRICAL INSTALLATION	19
SECTION 3: MAINTENANCE	21
3.1 PARTS LIST.....	21
3.2 CLEANING.....	22
3.3 DOOR MAINTENANCE	22
SECTION 4: WARRANTY.....	22
SECTION 5: SUPPORT & SERVICE	22
5.1 ARCTIC SUPPORT CONTACT INFORMATION	22
5.2 TRANSIT DAMAGE	22
5.3 INCORRECT PARTS SHIPPED.....	23
5.4 REQUESTING SERVICE & REPAIR UNDER WARRANTY	23
5.5 ARCTIC WALK-IN PARTS.....	23

SECTION 1: GENERAL INFORMATION

1.1 INTRODUCTION

These instructions have been prepared to assist you with the assembly of your Arctic Walk-in Cooler/Freezer manufactured sliding door. A single set of instructions can scarcely cover all situations; however, the following procedures apply to most installations and can be used as general guidelines.

Arctic manufactured sliding doors are pre-assembled, checked for operation and dismantled for shipping at the factory. All components are labeled for field installation.

Sliding doors NOT manufactured by Arctic are NOT pre-assembled at the factory. Please follow the OEM's installation guidelines included with the doors to ensure proper installation and operation. Contact the OEM's support team for any technical advice during installation.

1.2 INSPECTION

Sliding door panels and door hardware components were inspected at the factory before shipment; however, freight damage or shortages can occur. Count and inspect your shipment carefully and describe on the delivery ticket any shortages or damage to cartons/pallets or contents before signing for the shipment. If concealed damage is discovered after receipt of goods, save all packaging materials, and contact us immediately.

Locate the **Accessories Box** which contains the **Walk-in Installation Drawings**, Assembly wrench, Plugs and other accessories necessary for the assembly of the walk-in box. The accessories box is typically smaller than other cartons and should be easily accessible before unstacking the panels.

1.3 HANDLING OF PANELS

SAFETY TIP

Always wear protective gear (gloves and safety glasses) when handling walk-in panels and hardware.

Damage to the panel sections and accessories can occur if they are not handled properly during unloading or set-up. To minimize risk of damage, observe the following precautions:

1. Stack panels on a platform, on 2x4's or protective material to avoid contact with ground.
2. Protect panels from direct contact with any rough surface.
3. Avoid resting panels on their corners or edges and keep panels flat to prevent denting.
4. When handling panels over 12' long, hold panels vertically. If panels are to be handled flat the center section must be supported with additional manpower.
5. Do not leave your panels stored as shipped for extended periods of time. Panels in contact with other panels, other metals, or some packaging materials in the presence of moisture can become permanently stained.
6. If panels must be kept in outdoor storage, cover them carefully with a dark plastic sheeting or a dark tarpaulin to keep sun out. Panels in contact with other panels, other metals, or packaging materials in the presence of moisture can become permanently stained. Store panels on edge with the grooved side (female) facing down. Use dried wood spacers to provide a ventilation gap between panels to prevent stains from forming on the panels' metal skins. Avoid storing panels outside (even if covered) for long periods of time as it may cause deterioration of the materials not covered by the warranty.

1.4 IMPORTANT INFORMATION BEFORE INSTALLATION

For proper installation, tight panel seams, and proper door operation the walk-in box and door opening **MUST** be leveled and plumbed in all directions.

CONCRETE FLOORS

Always consult with your General Contractor before installation of your walk-in box in a recently poured concrete pad or tiled floor to ensure enough curing time has been allowed.

Concrete, grout, and other construction materials may outgas chemicals for weeks (or even months) that can cause staining/corrosion of walk-in cooler metal surfaces. Muriatic acid liquid and fumes, which is often used by concrete contractors, will also cause staining/corrosion. We recommend that our customers and their General Contractors fully understand the cure time of the concrete, tile grout, and any other materials in proximity to the walk-in and provide adequate ventilation to move these gases out and away from the walk-in cooler. Inadequate ventilation or ventilation for too short of a time may result in staining/corrosion of walk-in cooler metal. This staining/corrosion is not covered by warranty. If in doubt, contact your concrete supplier, tile contractor, general contractor, etc. for the number of days for the concrete, grout, and other construction materials to have fully outgassed and install your walk-in cooler after this date.

CAULKING

The use of caulking sealant (supplied by others) in between seams of walk-in panels is an accepted industry practice and in some cases a requirement depending on the application or location of the project. Please consult with your local inspector before installation of the walk-in to ensure compliance with local codes and regulations.

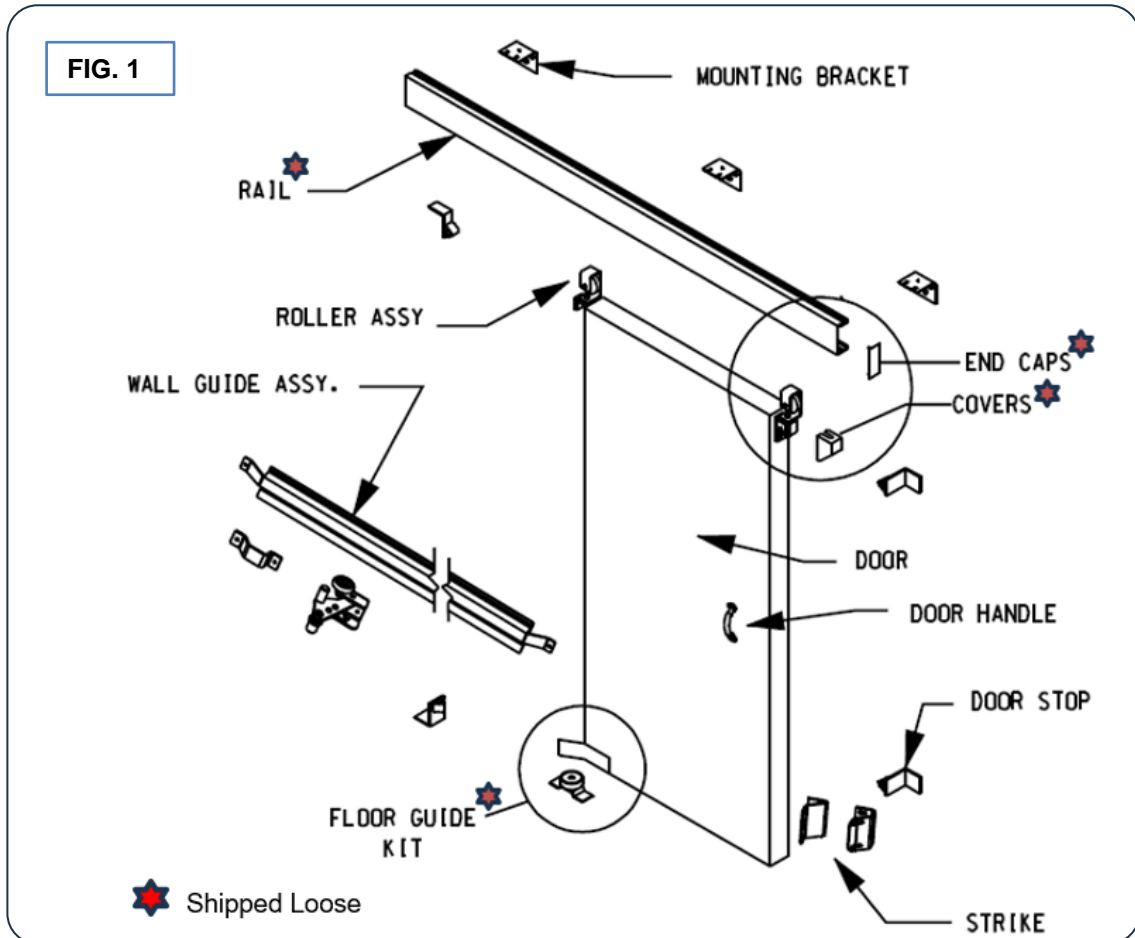
When caulking, use a ¼" bead at a rate of about 25 linear feet of caulking per tube (10oz tubes). When using caulking between panels, run the sealant bead on the warmer side.

See details on page 7 of Arctic's Walk-in Installation & Operation Manual.

SECTION 2: INSTALLATION

2.1 LIST OF PARTS

DESCRIPTION	MOUNTED OR SHIP LOOSE	QTY
Mounting Brackets	Mounted on walls	3 or more when required
Rail Assembly: aluminum track(1), plastic ramp(1), Nut Hanger Plate Assembly (1 per hanging bracket) and anti-lift(2)	Assembled - Shipped loose	1
5/16-24 X 5/8 Hex head screw w/ 5/16" washer (to mount rail to mounting brackets)	Mounted on Nut Hanger Plate	2 per mounting bracket
1/4-20 X 3/4 Hex head screw w/ 1/4"- 20 hex nut and lock washer (to mount anti-lift bracket)	Mounted	1 per mounting bracket
Door-stops	Mounted (2) - Shipped Loose (2)	4
Door Gasket (pre-mounted on walk-in opening frame)	Mounted*	1
End Caps	Shipped loose	2
Covers	Shipped loose	2
Door Plug with Rollers Assy, Handle int/ex., Floor guide plate and Strike	Assembled - Shipped Loose	1
Floor Guide Roller	Shipped loose	1
Strike - wall mounted	Mounted	1
Padlocking Accessory * (optional accessory) *	Mounted	1



IMPORTANT

Always wear protective gear (gloves and safety glasses) when handling walk-in panels. The walk-in Layout Drawing included in the Accessories Box will guide you in establishing where each door goes.

Arctic uses **KASON 8100 series sliding door hardware** on its sliding doors. Ensure that all parts are included (mounted or shipped loose) as listed on page 4.

Many of the steps on this guide have been performed at the factory (factory pre-assembled). Familiarize yourself with all the parts and the full set of instructions before starting installation.

The door components and construction design are based on a **2" door overlap** on all sides of the door.

The figures and text refer to a **LEFT DOOR OPENING**. Reverse for right opening doors.

2.2 INSTALLATION PROCEDURE

GASKET CHANNEL AND GASKET (Pre-installed at the factory*)

***NOTE:** On openings of more than 36" the door gasket will be un-mounted from the side channels and left taped to the transom panel (header panel).

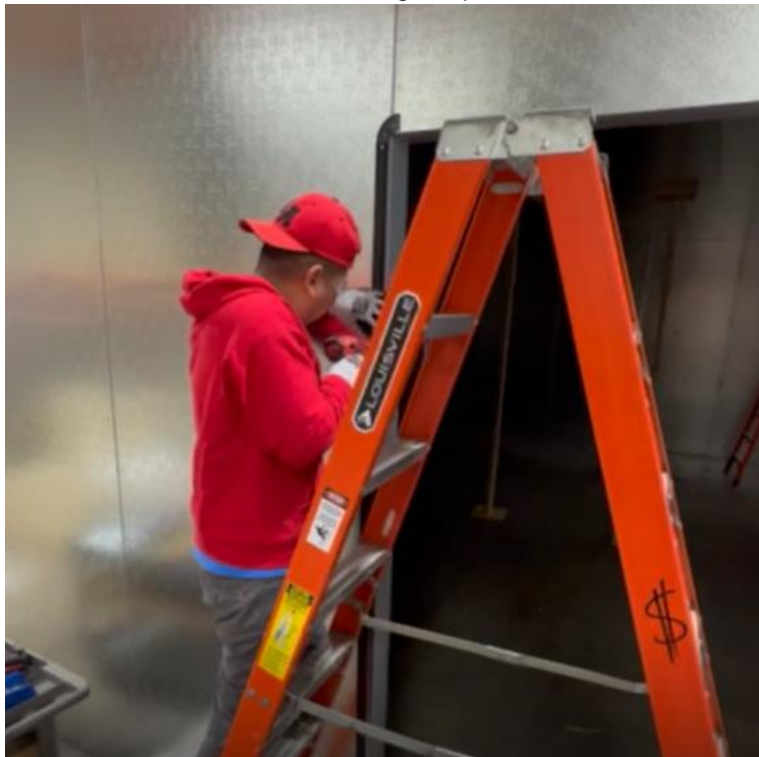
1. Position a track corner piece on one corner of the door opening ensuring it is squared with the opening.



2. Anchor the corner piece using the predrilled holes and the supplied sheet metal screws.



3. Repeat for the opposite corner.
4. Measure the vertical dimension between the floor and the corner piece and cut a piece of channel to this dimension.
5. Anchor the vertical channel to the door frame using the provided sheet metal screws at 12" O.C. max.



6. Repeat the process on the other jamb of the door opening.

7. Measure the horizontal distance between the two corner pieces and cut a piece of channel to this dimension.



8. Anchor the horizontal channel to the door header using the provided sheet metal screws at 12" O.C. max.



- Starting at one corner, slide the gasket into the groove of the channel using the end with the flat dart. Use the inside track of the channel – the one closest to the opening. Ensure the gasket is seated correctly and that there are no kinks or twists. The gasket should be soft and malleable. Place gasket in warm water to soften if it is not malleable.



Slide this end into the channel's groove.



- Cut the excess gasket at the bottom of both vertical sections on the jambs.



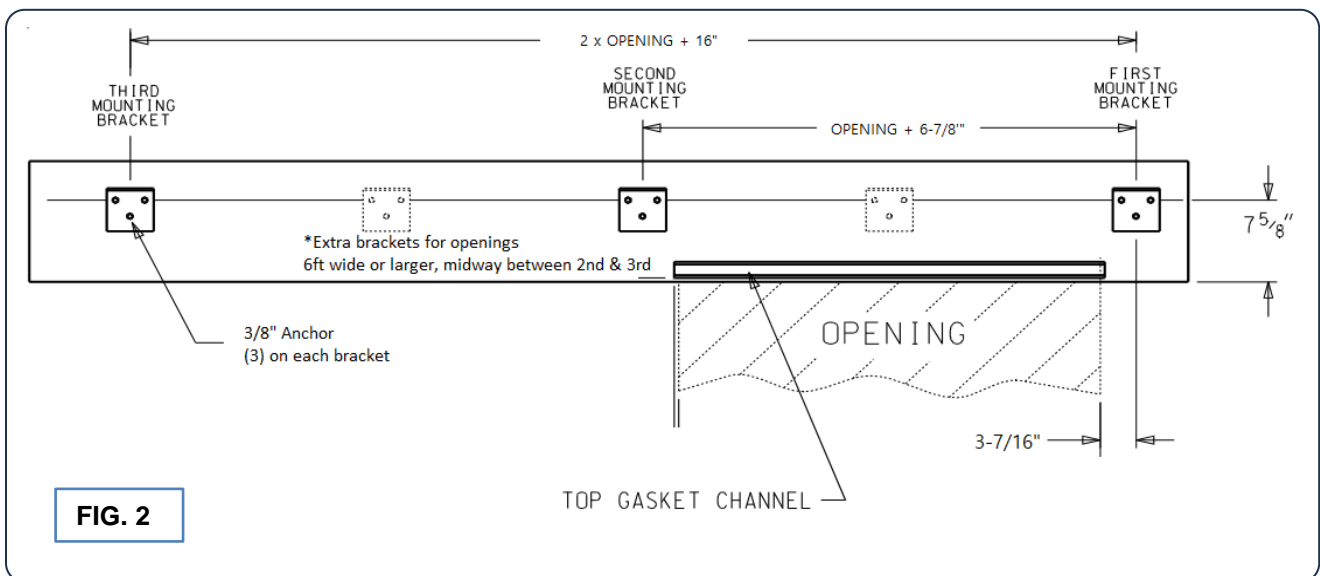
MOUNTING BRACKETS (Pre-installed at the factory)

11. VERTICAL LOCATION: The mounting brackets' top two anchoring hole centers should be positioned at $7\frac{5}{8}$ " measured from the top of the opening (See FIG. 2).

HORIZONTAL LOCATION: The mounting brackets' center anchoring hole should be positioned at $3\frac{7}{16}$ " from the vertical opening (See FIG. 2).

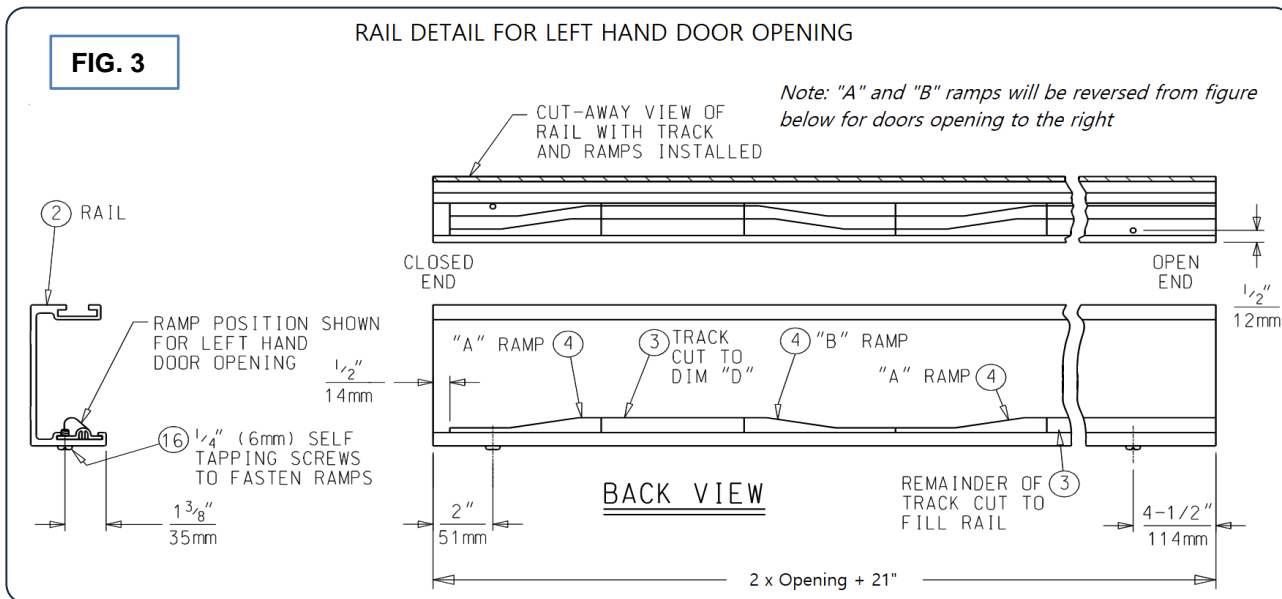
Mounting brackets are anchored to the wall (from the factory) with $\frac{5}{16}$ " bolts. Ensure the horizontal anchoring line is kept level and they are positioned as illustrated on FIG. 2.

Note: On openings 6ft wide and greater, additional mounting brackets are supplied. Additional brackets are positioned midway between the first and second brackets and midway between the second and third brackets. On a door that slides open to the left, the first mounting bracket is the closest to the right side when the door is closed (See FIG. 2).



RAIL, TRACK AND RAMP (Factory Pre-assembled/shipped loose)

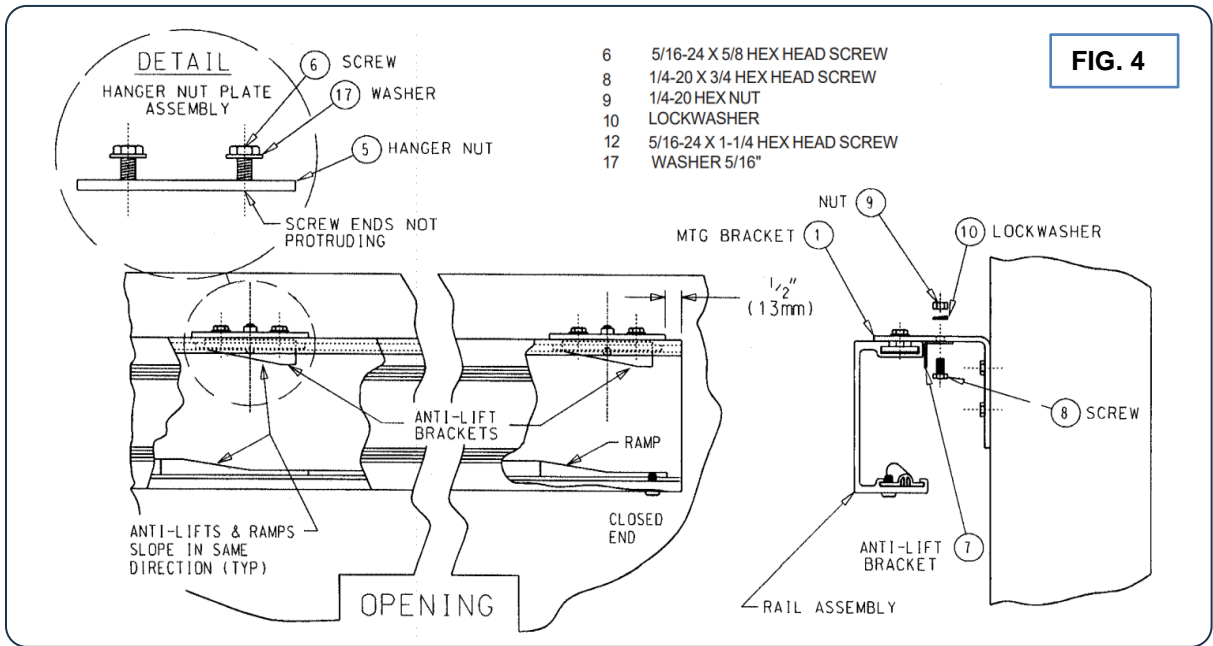
12. The rail section has been pre-cut at the factory to the specified size. The aluminum track and plastic ramps A & B have been pre-cut and installed on the rail at the factory. The full rail assembly is temporarily mounted at the factory during the walk-in pre-assembly process to ensure proper operation of the sliding door and then dismantled and shipped loose for re-installation in the field (See FIG. 3 for details).



13. Place the rail assembly temporarily on top of the mounting brackets installed on Step 11 with the approximate overhang on each side.

- a. Slide each hanger nut plate with two 5/16-24 X 5/8 hex head screws and 5/16 washers as shown in "DETAIL" in FIG. 4. Place nut plate assemblies into rail slot positioned to align with the wall mounting brackets.



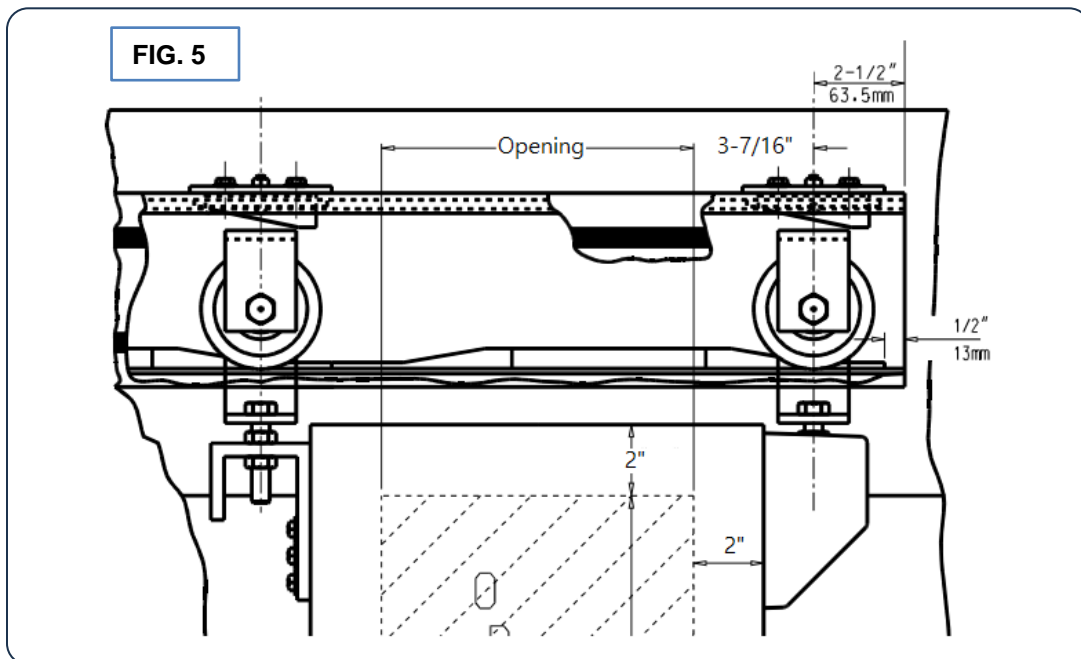


- b. At this point, proceed to hang the rail from the mounting brackets. Slide 5/16-24 X 5/8 hex head bolts and washers fully into slot on mounting brackets (see detail on FIG. 4). Adjust rail horizontally so that it overhangs the end of the mounting bracket by 1/2" (see FIG. 5) AND **tighten screws** from step a.





- c. Assemble anti-lifts to wall brackets with slope of anti-lifts parallel to the slope of ramps (see detail in FIG. 4 & 5). Use one 1/4"-20 X 3/4" Hex head screw w/ 1/4"-20 hex nut and lock washer per bracket to secure anti-lift bracket and tighten bolts securely.

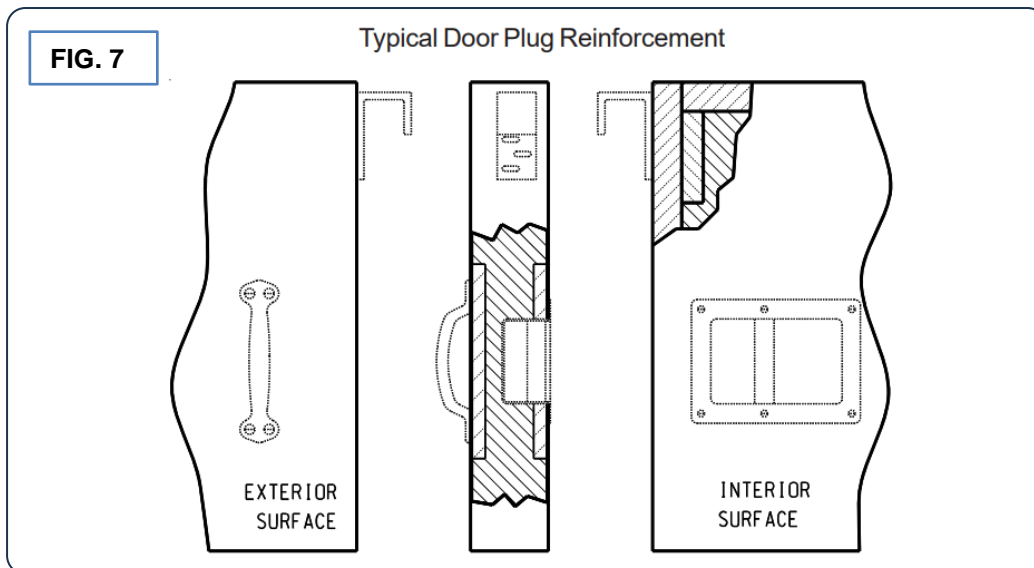
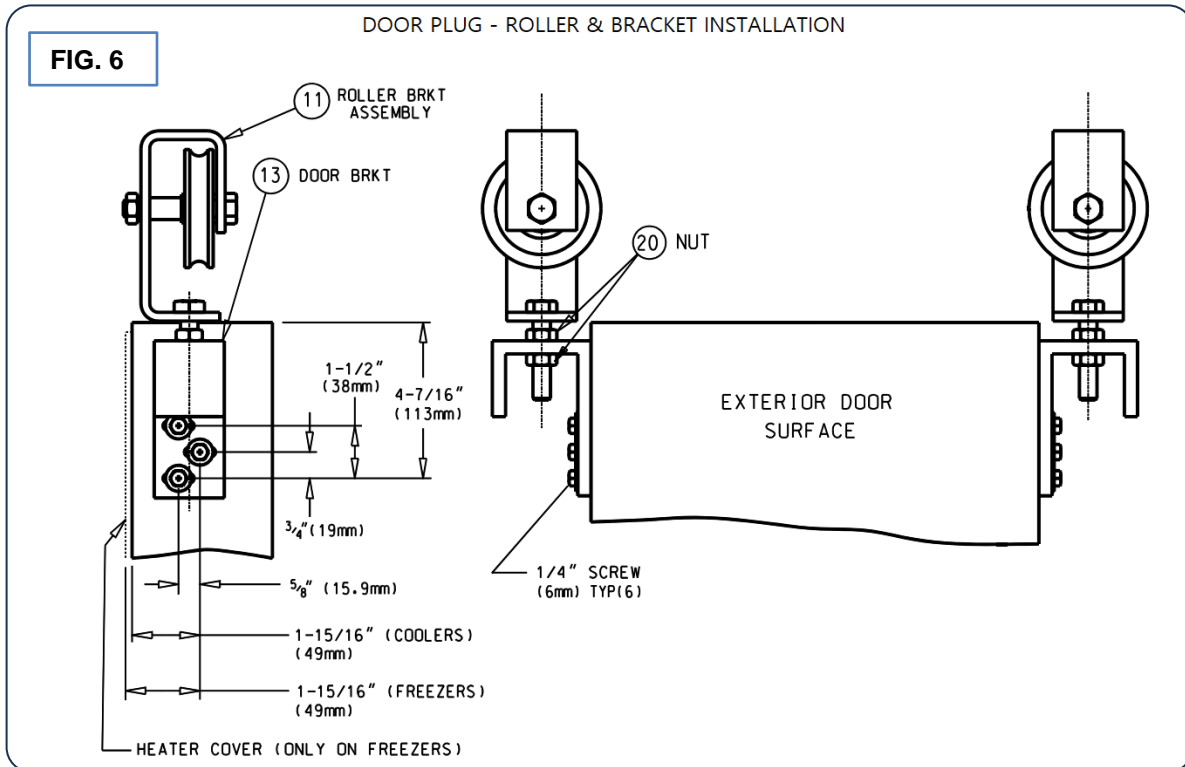


DOOR PLUG

14. Door brackets, roller bracket assemblies, interior & exterior handles and sweep gasket are pre-installed on the door plug at the factory. Ensure that all hardware is located and assembled as seen in FIG. 6 & 7.

***Note:** The door plug is reinforced with backing only in the handle and door bracket areas (See FIG. 7). If re-positioning of handles or other hardware component of the door plug is required, please contact the factory.

The door plug is mounted on the rail at the factory to test for operation. It is dismantled for shipping purposes.





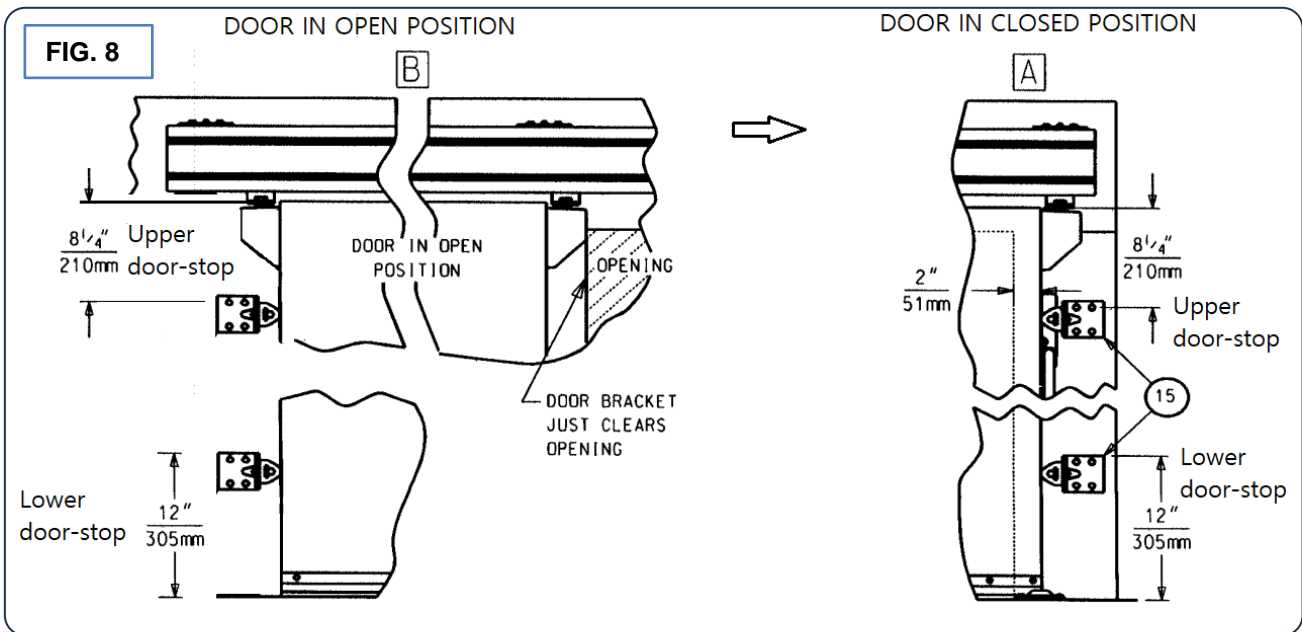
DOOR MOUNTING

15. Remove the two door stoppers mounted at the factory on the CLOSED END walls. Set aside for re-installation.
16. Lift door, placing rollers on track from the CLOSED END of rail and slide door until door reaches full closed position.
NOTE: Use caution when moving the door plug. Avoid excessive dragging of the bottom section to prevent tearing the sweep gasket.



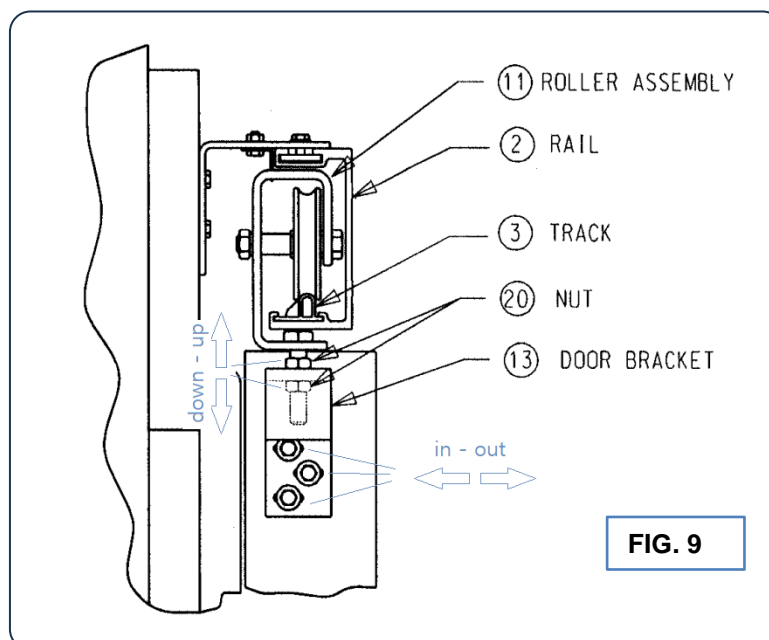
DOOR-STOPS INSTALLATION (Pre-installed at the factory)

17. Close the door so that it contacts the gasket and is centered on the opening. The door should overlap the opening by 2" on all sides by design.
18. With the door in the closed position: re-install the upper and lower door-stops removed on step 15 so that it touches the door simultaneously with the upper door-stop as shown on FIG. 8A
19. Slowly open the door until entire door and all mounting hardware clear the door opening (as shown on FIG. 8 B) and proceed to install upper and lower door-stops (OPEN END door-stops are pre-mounted at the factory on the wall)



DOOR ADJUSTMENTS

20. Adjust the door using the screws and bolt in the door bracket:
- “in” or “out” via the three slotted horizontal holes (See FIG. 9)
 - “up” or “down” via the bolt and two jam nuts (See FIG. 9). *Run the top nut most of the way up the bolt, adjust height by turning lower nut and tighten top nut against door bracket when done.*
 - The interior door face should lightly contact gasket when door is fully closed. No visible gaps should be present from the inside. **DO NOT OVERCOMPRESS GASKETS.**
 - The gap between the bottom of the door plug and the floor is 1-1/4” in the closed position. The sweep gasket should contact the floor when the door is fully closed and rise above it when the door is opened, this prevents unnecessary dragging of the sweep with the floor when opening.
 - Tighten all screws when all adjustments are complete.

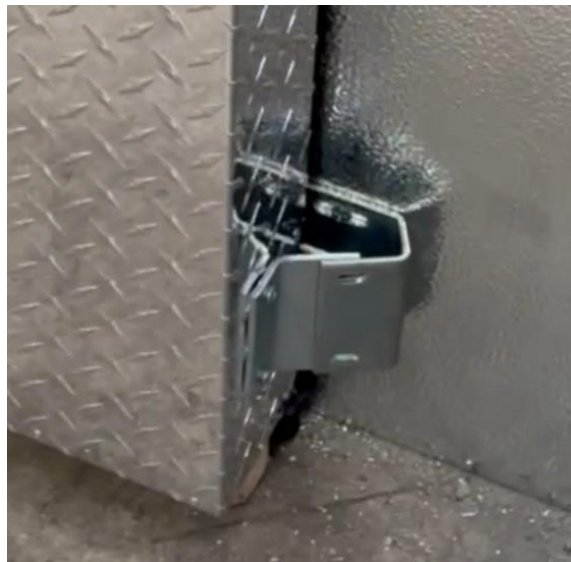


LOWER GUIDE INSTALLATION

21. Depending on the options chosen by the customer at the time of purchase, the door will have ONE of these options:
 - a. Heavy Duty Floor Roller with strike (Standard)
 - b. Wall Guide
 - c. Low Profile Floor Guide
22. The Floor Roller should be positioned with the roller touching the angled portion of the striker (the striker is pre-mounted at the factory) and ensuring that when the door is fully closed it creates a slightly snug fit against the frame. **DO NOT OVERCOMPRESS GASKETS.** Caution should be exercised to ensure the roller assembly doesn't bind the door making it difficult to open.
Anchor the door roller assembly to the floor using appropriate floor anchors (by others).



23. With the door fully closed, proceed to install the strike on the door frame. The tongue and strike should be positioned ensuring that when the door is fully closed it creates a slightly snug fit against the frame (pre-installed at the factory). **DO NOT OVERCOMPRESS GASKETS.**



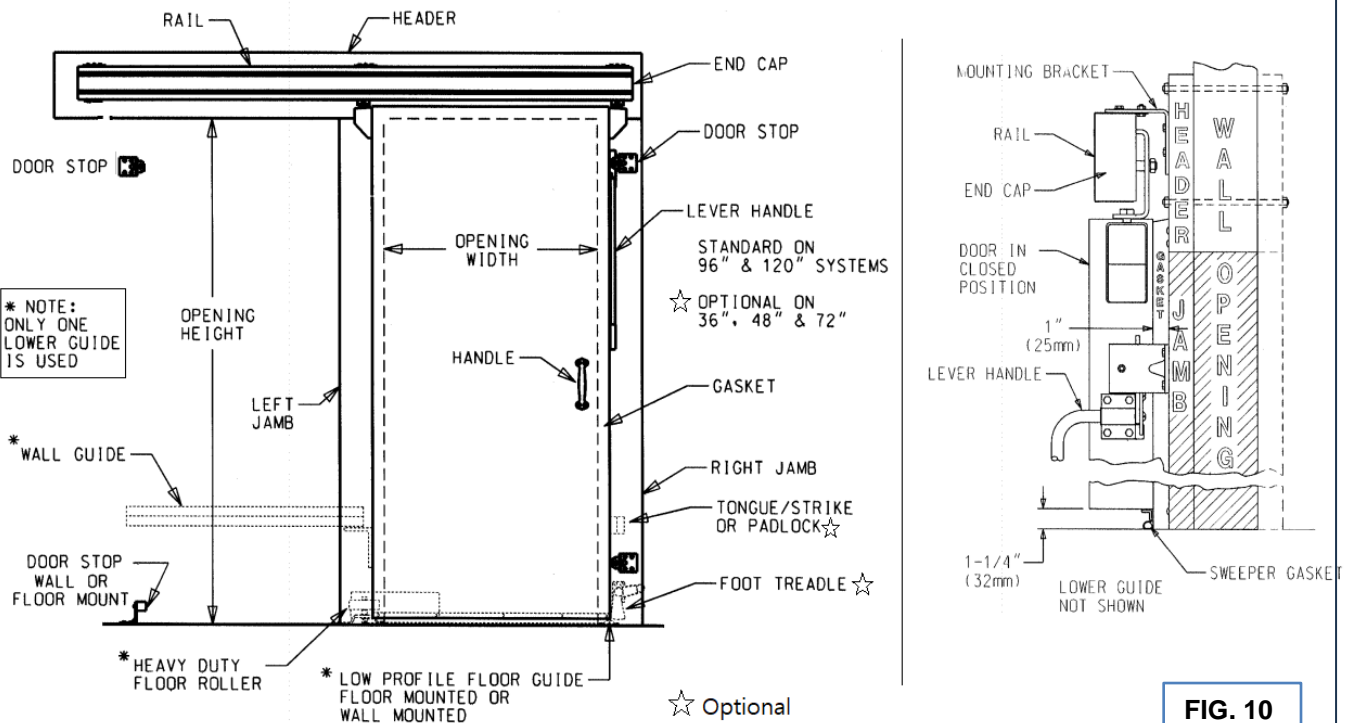
COVERS AND END CAP INSTALLATION

24. After the door has been fully adjusted and working properly, attach the covers (2) to the door brackets using the tape supplied inside the covers. Insert end rail caps (2) into each end of the rail.



COMPLETED DOOR INSTALLATION

(Showing most common options)



2.3 ELECTRICAL INSTALLATION

(Only for freezer doors and doors with heated glass panels)

All electrical installations must be done by a qualified electrician.
All electrical connections must comply with National and Local Codes

Electrical Requirements

A 120V / 15 Amp supply connection (by others) must be provided via a J-box installed next to the rail's OPEN END to connect the door. A dedicated circuit is not necessary. The same circuit used for the walk-in lights may be used to supply power to the door cable.

Installation guidelines:

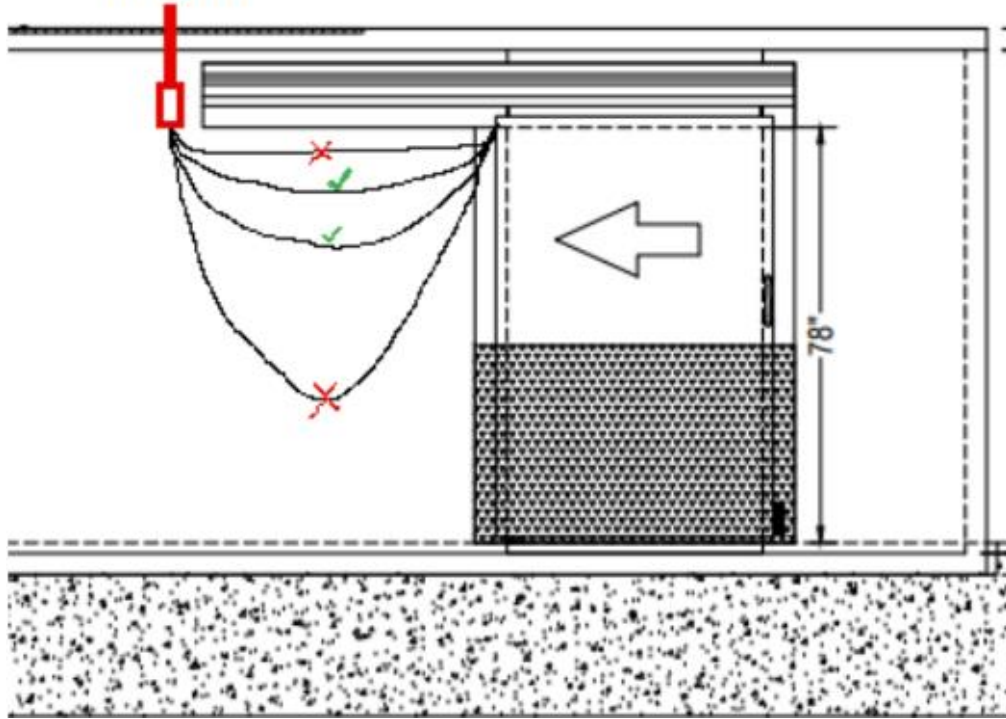
1. Sliding doors for freezers and sliding doors with heated glass panels come with a factory pre-wired cable (flat or coiled type) attached to the side of the door opposite the handle side. The supplied cable must be connected to a J-Box to provide power to the door plug (J-box is field installed by others).



2. Install a J-Box at the top of the wall adjacent to the door rail as seen in FIG. 11 (in red).
3. Provide 120V/1ph power to the installed J-box. Power can be from the nearest junction box that supplies power to the lights. **DO NOT** wire door electrical components to refrigeration dedicated circuits.
4. Enough length has been provided on the cord to allow for proper slack when the door is fully closed. The cable can be cut in the field to adjust the amount of slack. Avoid cutting the cable too short. Ensure there is no excessive slack when the door is closed or when the door is opened. See FIG. 11 for reference.
5. Use a proper strain relief system to attach the cord to the J-Box.
6. Secure connections inside the J-box using appropriate size wire nuts (Hot, Neutral and Ground).
7. Close the J-Box and check the door for operation before initiating power to door. **Ensure the cord does not tangle with other objects or that it drags on the floor when the door is opened.**
8. Turn power on to J-Box

120V / 1PH

FIG. 11



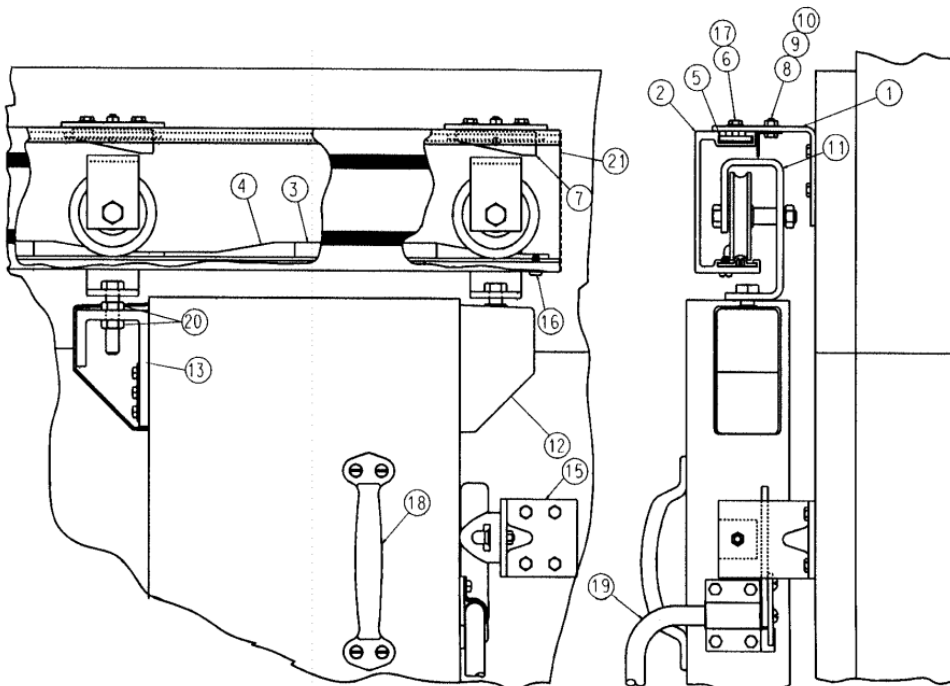
SECTION 3: MAINTENANCE

Arctic walk-in sliding doors are designed and manufactured to offer you many years of trouble-free service. Appropriate maintenance and care will protect your investment and prolong the useful life of your walk-in sliding doors.

Door and door hardware damage due to misuse, improper installation or negligence following Arctic's maintenance and cleaning guidelines is NOT covered by the warranty.

3.1 PARTS LIST

PART	PART NUMBER	DESCRIPTION
1	98000004550035	MOUNTING BRACKET
2	9800000551XXXX	RAIL
3	9850000320XXXX	TRACK
4	98600A09380117	RAMP, "A"
4	98600B09380117	RAMP, "B"
5	98000002000035	HANGER NUT PLATE
6	9004131F110625	5/16-24 X 5/8 HEX HEAD SCREW
7	98000004690035	ANTILIFT
8	9000525C110750	1/4-20 X 3/4 HEX HEAD SCREW
9	9008825C110000	1/4-20 HEX NUT
10	90153267110040	LOCKWASHER
11	98000000098	ROLLER ASSEMBLY
12	98000001500117	COVER
13	98000004590076	DOOR BRACKET
14	98500000036	INTERIOR RECESSED HANDLE (NOT SHOWN)
15	98500000311	DOOR STOP
15A	98000000311	DOOR STOP (NARROW)
16	9002125F110625	SCREW 1/4" SELF TAPPING
17	90138370110065	WASHER 5/16"
18	95001SP004	EXTERIOR PULL HANDLE
19	98000000009	LEVER HANDLE
20	9008950C110000	JAM NUT 1/2-13
21	98000002850000B	END CAP



3.2 CLEANING

- To maintain the appearance of the door surface, clean periodically with warm water and a mild soap solution.
- Dry thoroughly to prevent ice buildup.
- Do NOT use caustic or abrasive cleaners.
- DO NOT HOSE DOWN OR POUR WATER ON PANELS.
- DO NOT USE hydrochloric (muriatic) acid to clean any part of the walk-in.
- Clean door gaskets regularly- use baking soda and warm water mixture and wipe dry with a soft cloth.

3.3 DOOR MAINTENANCE

- Lubricate moving parts with petroleum jelly at least once a year.
- Periodically check hardware to ensure that fasteners are firmly anchored.

SECTION 4: WARRANTY



SCAN QR CODE TO REGISTER YOUR ARCTIC WALK-IN at www.arcticwalkins.com/

Full Arctic's Warranty Terms & Conditions at: arcticwalkins.com/warranty-service/

SECTION 5: SUPPORT & SERVICE

5.1 ARCTIC SUPPORT CONTACT INFORMATION

Please provide walk-in serial number stamped on the data tag located inside on the door frame.

ARCTIC CUSTOMER SERVICE

Central and Eastern U.S. (305) 883-5581
Western U.S. (626) 508-0920
support@arcticwalkins.com

5.2 TRANSIT DAMAGE

- Do NOT refuse walk-in shipments.
- Take lots of pictures before uncrating and after.
- Document visible damage on the Delivery Receipt.
- Mark the Delivery Receipt as "DAMAGED" and have the driver sign for it.
- Contact your Arctic representative immediately.

5.3 INCORRECT PARTS SHIPPED

- Before unpacking, please check Model of the component and confirm it matches the Order Acknowledgement
- Save all packaging until the component has been installed and operational.
- Contact your Arctic Representative immediately regarding any discrepancies.

5.4 REQUESTING SERVICE & REPAIR UNDER WARRANTY

Any licensed refrigeration company can service Arctic walk-ins. Refrigeration companies who service Arctic walk-ins under the 1-Yr warranty period, must submit proper documentation including: Walk-in serial number stamped on door data tag, condensing unit model and serial number, evaporator model & serial number, photos and complete explanation of diagnostics and worked performed. Arctic will cover reasonable labor charges within the factory's [Warranty Labor Allowance Guidelines](#).

5.5 ARCTIC WALK-IN PARTS

For walk-in parts under warranty please contact us at: support@arcticwalkins.com

To order replacement parts for Arctic walk-ins please visit us at: www.mywalkinparts.com



WALK-IN COOLERS AND FREEZERS

Engineering Reimagined®

Arctic Industries, LLC.

Miami, FL

(305) 883-5581

Los Angeles, CA

(626) 508-0920

<http://www.arcticwalkins.com>