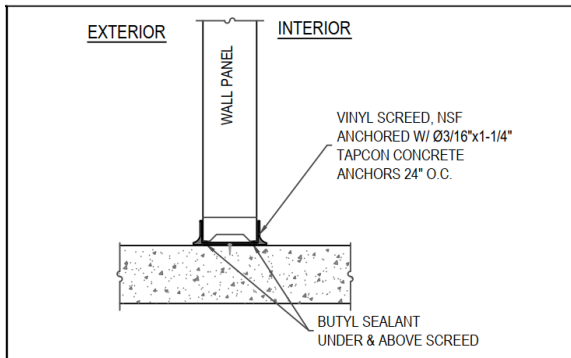


FLOOR CONNECTION SYSTEMS – OVERVIEW

Standard Floor Connection Systems provided by Arctic Industries, LLC are illustrated and described below. These floor connection systems are designed to keep the walk-in from shifting location on the floor and are not designed to meet any structural codes or criteria. If structural or seismic anchoring is required, please reach out to your Arctic Sales Representative for information on Seismic and Structural Anchoring Systems.

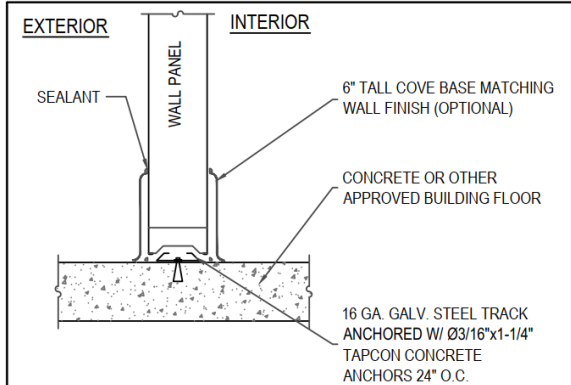
NO FLOOR: VINYL SCREED (All locations except California)



Provided by Arctic:

- Vinyl u-shaped screed pre-cut and labeled with a drawing illustrating screed location – final field fitting may be required
- Concrete screw anchor Ø3/16" x 1-1/4" long for spacing every 24" around perimeter
- Butyl sealant caulking tubes for four Ø1/4" beads under and above screed

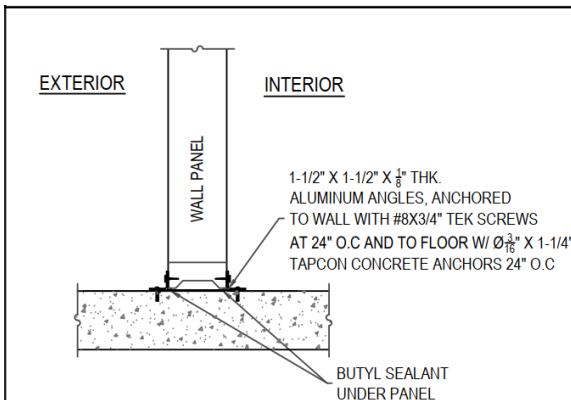
NO FLOOR: METAL TRACK (California and when requested)



Provided by Arctic:

- 16 ga. galvanized steel screed in 8' lengths for field cutting and installation around perimeter
- Concrete screw anchor Ø3/16" x 1-1/4" long for spacing every 24" around perimeter
- Butyl sealant caulking tubes for two Ø1/4" beads under walls

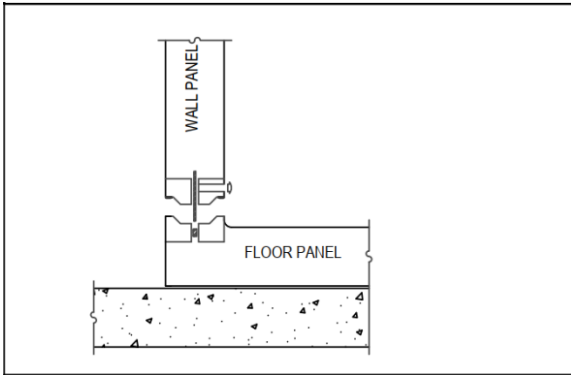
NO FLOOR: ANGLE CONNECTION



Provided by Arctic:

- 1-1/2" x 1-1/2" x 1/8" aluminum angle in 8' lengths for field cutting and installation around perimeter
- Concrete screw anchor Ø3/16" x 1-1/4" long for spacing every 24" around perimeter
- #8 x 3/4" long stainless steel TEK screws for spacing every 24" around perimeter
- Butyl sealant caulking tubes for two Ø1/4" beads under walls

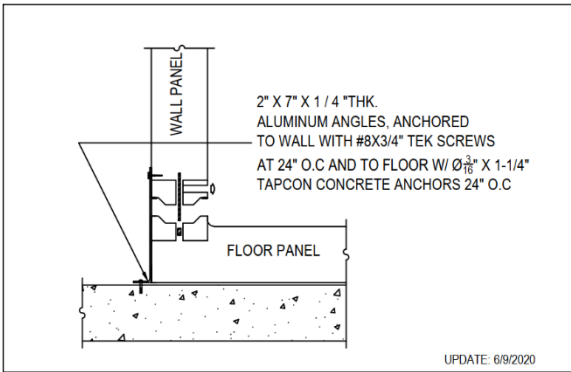
WITH FLOOR: NO ANCHORS (typically for indoor installations)



Provided by Arctic:

- No anchors or sealant provided

WITH FLOOR: ANGLE CONNECTION (typically for outdoor installations)



Provided by Arctic:

- 2" x 7" x 1/4" aluminum angle in 8' lengths for field cutting and installation around perimeter
- Concrete screw anchor $\text{Ø}3/16"$ x 1-1/4" long for spacing every 24" around perimeter
- #8 x 3/4" long stainless steel TEK screws for spacing every 24" around perimeter

Arctic's floor connection systems have been developed from decades of experience and thousands of walk-in coolers and freezers. Arctic provides only the items stated on the details specific to the project. Items noted as "optional" are options that will be provided only when requested and purchased separately. Items noted "by others" are outside of Arctic's scope of offering and should be sourced elsewhere.